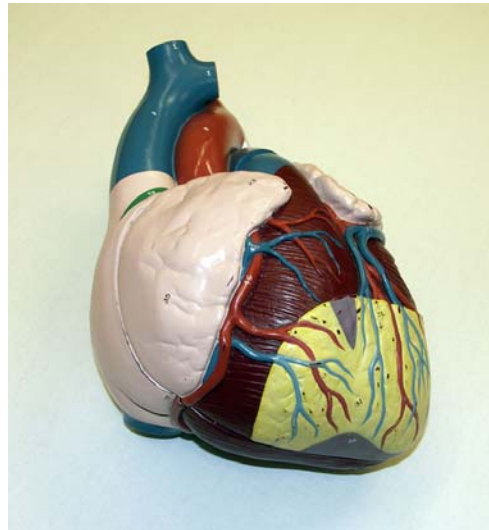
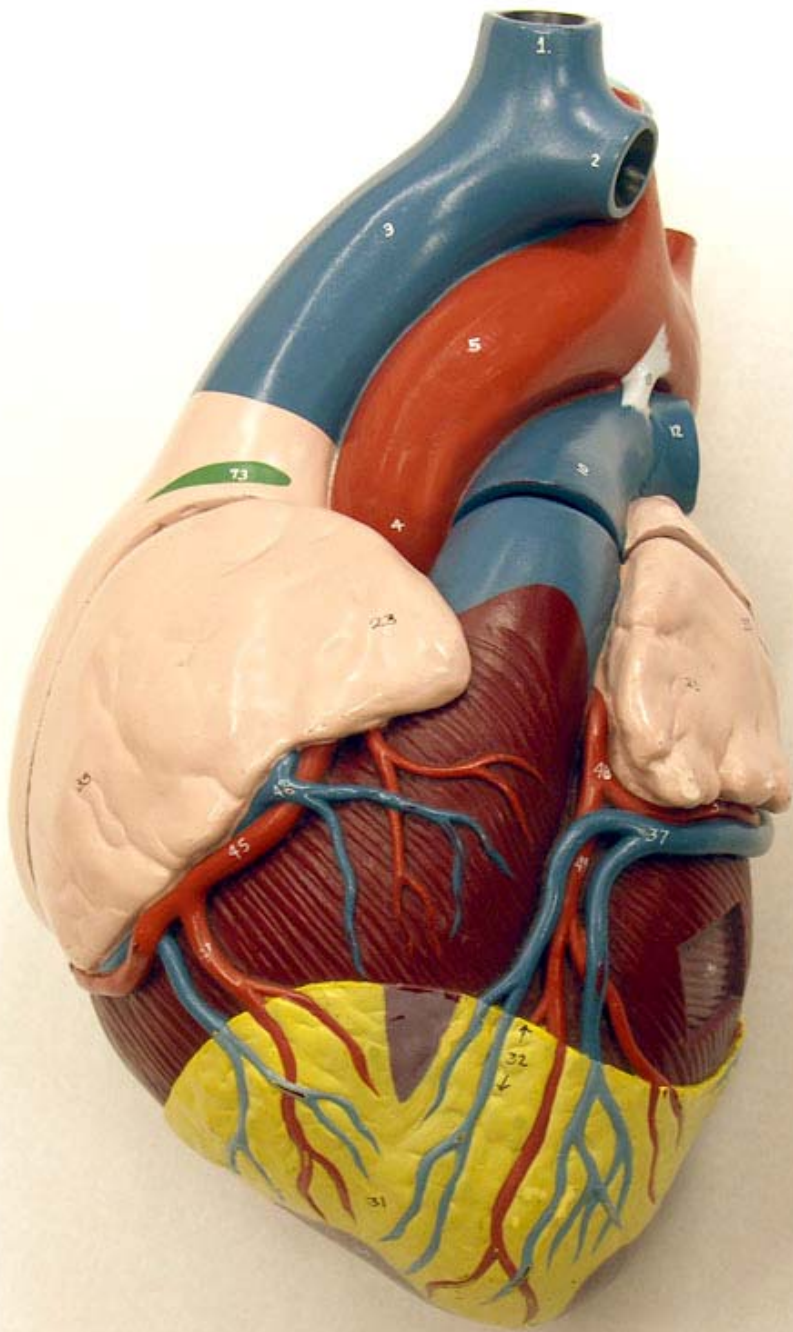
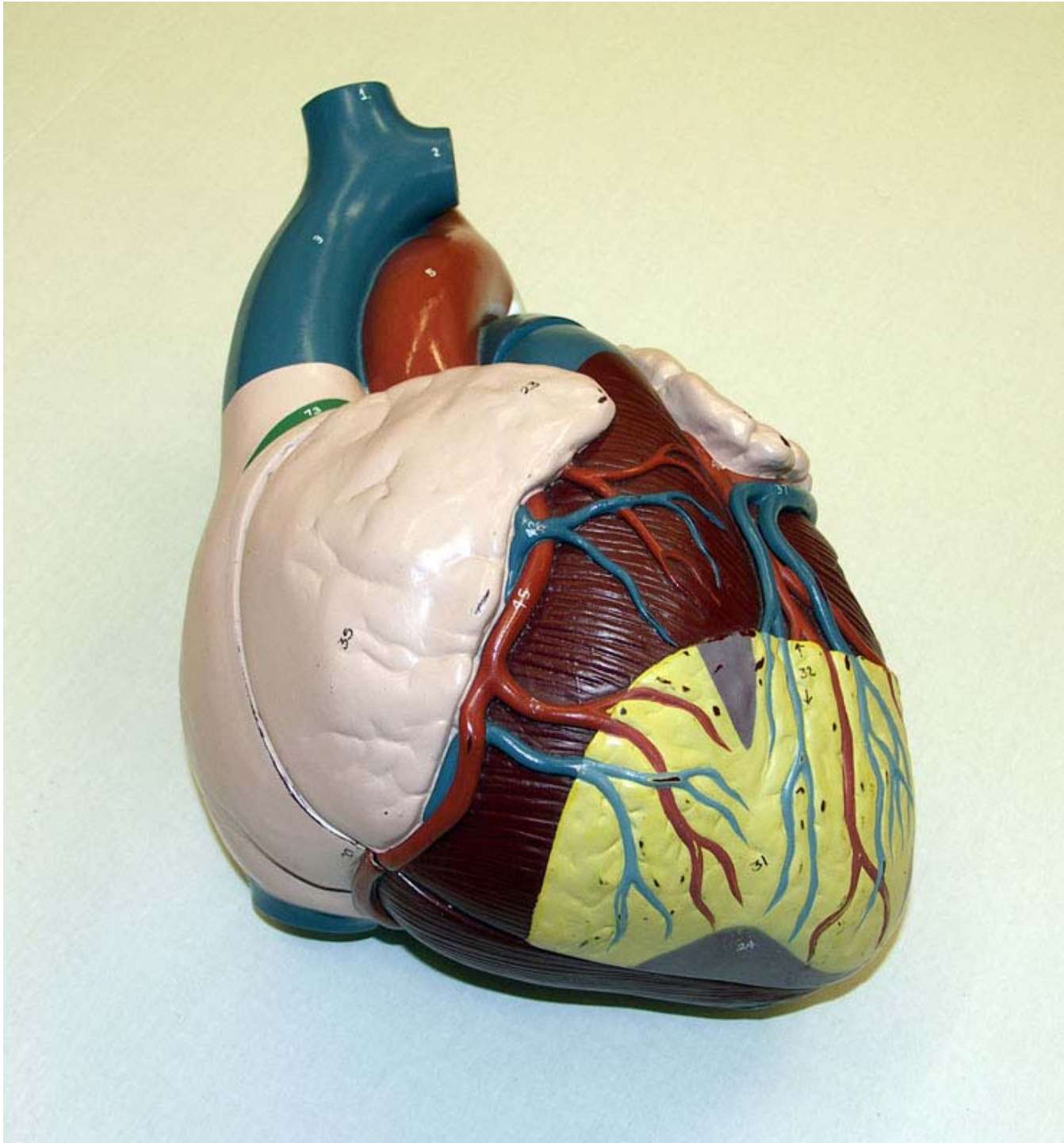


The Heart

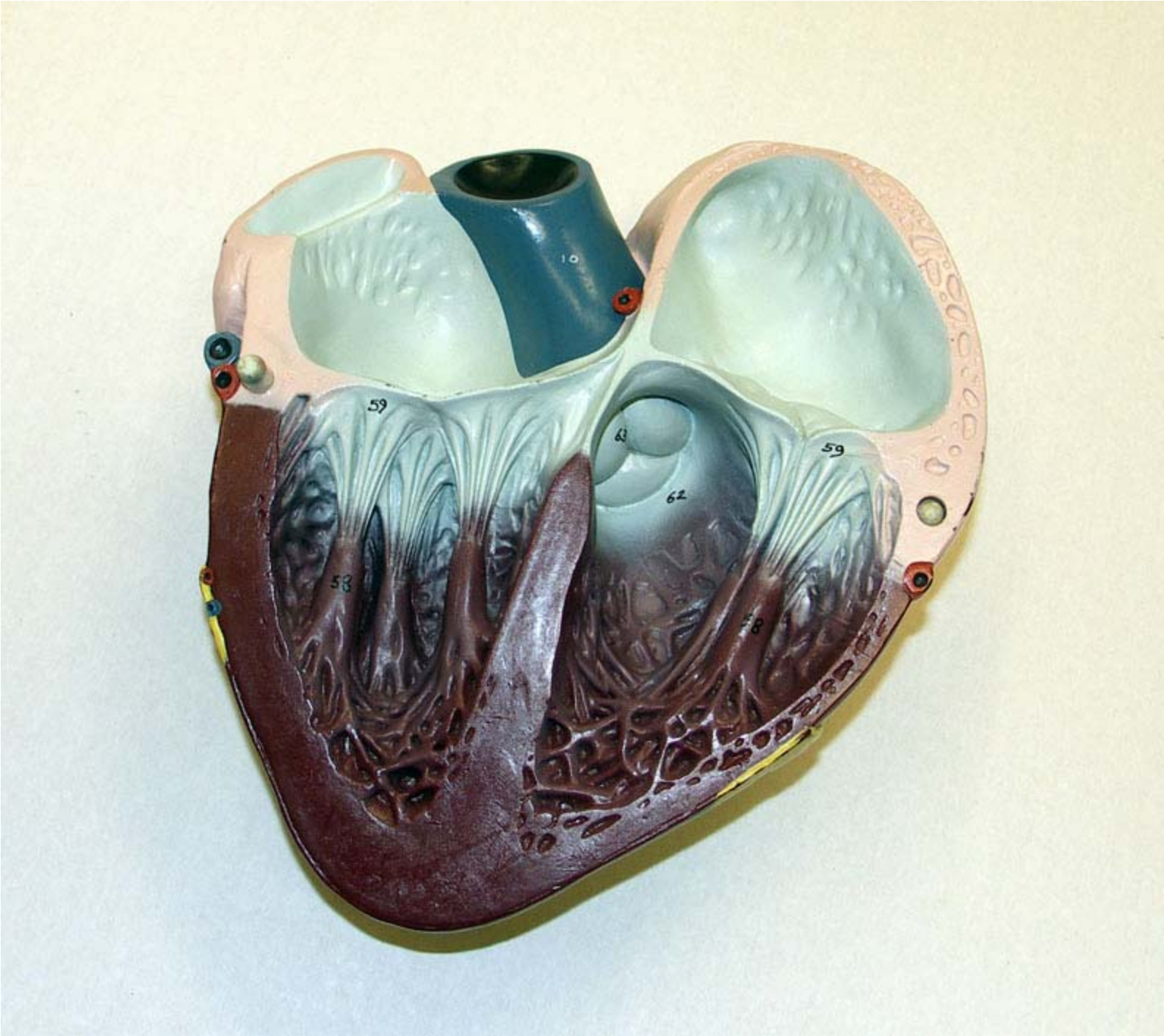
Lab Model

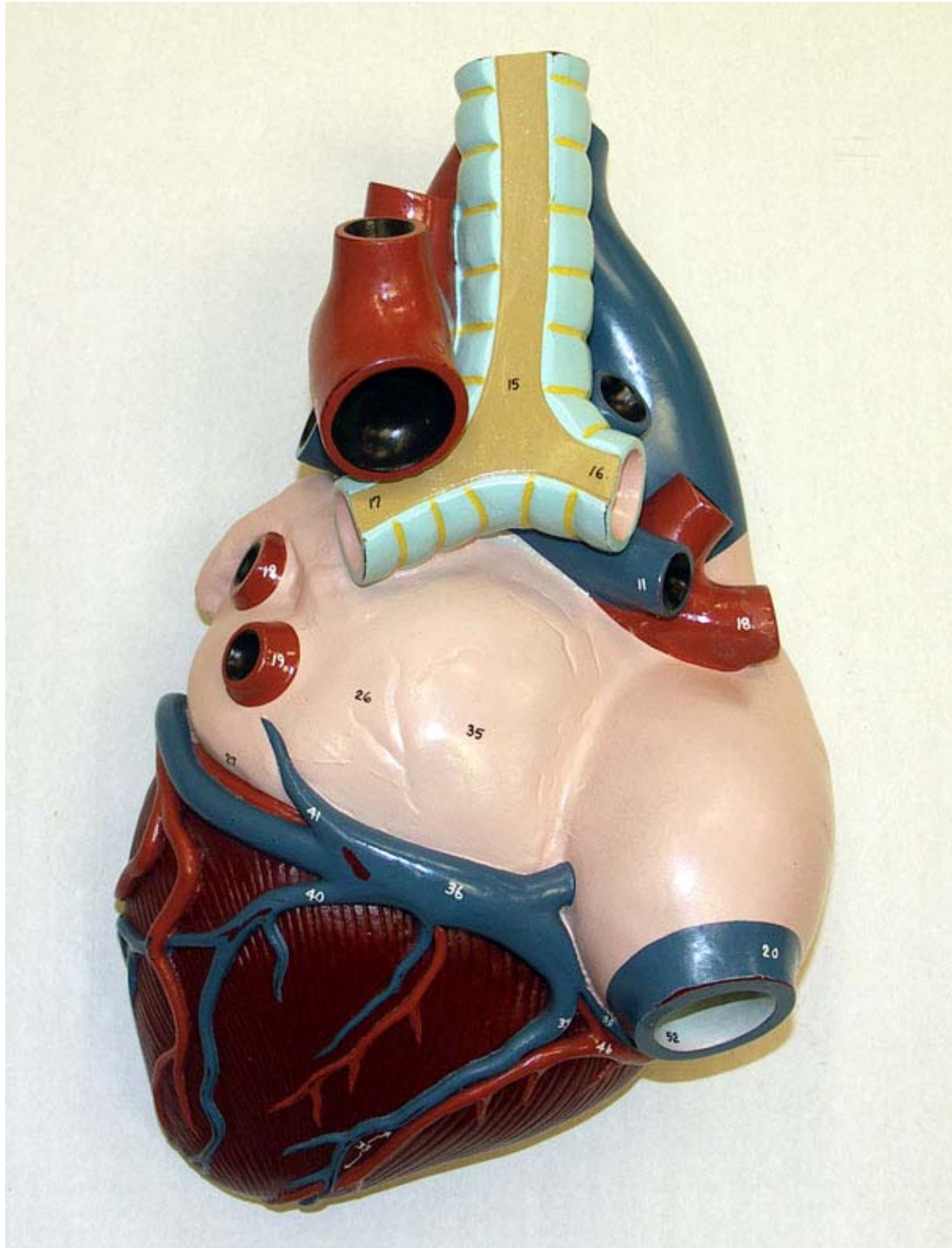












Key to abbreviations: R. = right; L.=left; a.=artery; v.=vein

Nystrom Enlarged Heart



1. R. brachiocephalic (innominate) v.
2. L. brachiocephalic (innominate) v.
3. Superior vena cava
4. Ascending aorta
5. Arch of aorta
6. Brachiocephalic (innominate) a.
7. L. common carotid a.
8. L. subclavian a.
9. Descending aorta
10. Pulmonary trunk
11. R. pulmonary a.
12. L. pulmonary a.
13. Ligamentum arteriosum
14. Trachea
15. Bifurcation of trachea
16. R. bronchus
17. L. bronchus
18. R. pulmonary v.s
19. L. pulmonary v.s
20. Inferior vena cava
21. R. atrium
22. Sulcus terminalis
23. R. auricle
24. R. ventricle
25. L. auricle
26. L. atrium
27. Coronary sulcus
28. L. ventricle
29. Superficial muscle of L. ventricle
30. Deep muscle layer of L. ventricle
31. Fat enclosed between epicardium & myocardium
32. Anterior longitudinal sulcus
33. Posterior longitudinal sulcus
34. Apex of heart
35. Base of heart
36. Coronary sinus
37. Great cardiac v.
38. Small cardiac v.
39. Middle cardiac v.
40. Posterior v. of L. ventricle
41. Oblique v.
42. Anterior cardiac v.s
43. Orifice of R. coronary a.
44. Orifice of L. coronary a.
45. R. coronary a.
46. Posterior descending a.
47. Marginal a.
48. L. coronary a.
49. Anterior descending a.
50. Circumflex a.
51. Orifice of superior vena cava
52. Orifice of inferior vena cava
53. Orifice of coronary sinus
54. Fossa ovalis
55. Limbus fossae ovalis
56. Tricuspid valve
57. Endocardium
58. Papillary muscles
59. Chordate tendineae
60. Trabeculae carneae
61. Moderator band
62. Conus arteriosus
63. Pulmonary semilunar valve
64. Orifice of R. pulmonary v.s
65. Orifice of L. pulmonary v.s
66. Pectinate muscles of L. auricle
67. Bicuspid (mitral) valve
68. Muscular part of interventricular septum
69. Membranous part of interventricular septum
70. Aortic semilunar valve
71. Wall of L. ventricle
72. Wall of R. ventricle
73. Sinoatrial (SA) node
74. Atrioventricular (AV) node
75. Atrioventricular bundle
76. R. bundle branch
77. L. bundle branch
78. Purkinje fibers

